



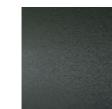
## ERA COMODINO

design David Lopez Quincoces

Bedside table consisting of a central part in MDF lacquered in matt black and frontal external parts in MDF veneered in Stone Oak® or walnut lacquered "Canaletto" or polished in glossy finish RAL-K7 3005 Red Wine, RAL-K7 5020 Ocean Blue, RAL-K7 7030 Stone Grey, RAL-K7 7039 Quartz Grey or RAL-K7 9001 Cream, with drawer on Blum® runners, with three compartments of different heights and volumes. MDF top thickness 18mm, paired with a 3mm thick sheet

frame in steel painted brass, veneered in Stone Oak® or walnut lacquered "Canaletto", coupled with the body of the drawer by means of bushes and pins. Brass feet screwed to the Ø16mm round steel legs, with integrated fastening elements, connected to each other by steel rods Ø10mm. Floor support secured by black PVC feet. All metal parts are coated with epoxy powder gunmetal grey colour and brass elements are satinized and finished with a transparent matt varnish.

### Structure

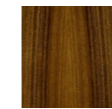


Steel with  
Gunmetal Grey  
Coating

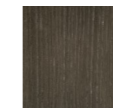


Matt Brass

### Top



Walnut Painted  
Canaletto



Stone Oak®

### Frontal External Parts



Lacquered  
Glossy  
RAL-K7 9001  
White Cream



Lacquered  
Glossy  
RAL-K7 3005  
Red Wine



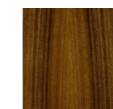
Lacquered  
Glossy  
RAL-K7 5020  
Blu Ocean



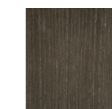
Lacquered  
Glossy  
RAL-K7 7030  
Stone Grey



Lacquered  
Glossy  
RAL-K7 7039  
Quartz Grey

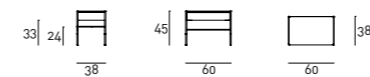


Walnut Painted  
Canaletto



Stone Oak®

### Technical Drawings



### Notes

Stone Oak®: this wood owes its particular coloring to an entirely natural process. Because of this, some slabs may look more brown than others. Our commitment is to provide you a high quality product; any differences in color should not be considered as defects.

On request, an additional protective (acrylic solvent) painting is available for the Stone Oak® finishing only. It should be noted that this additional coating slightly changes the natural color and texture of the surface. Although this supplementary painting increases the surface resistance, it is still a natural material; therefore small superficial stains, due to oil or other substances, have to be promptly removed, before being absorbed in depth by the wood. Thus, we recommend regular care and maintenance.